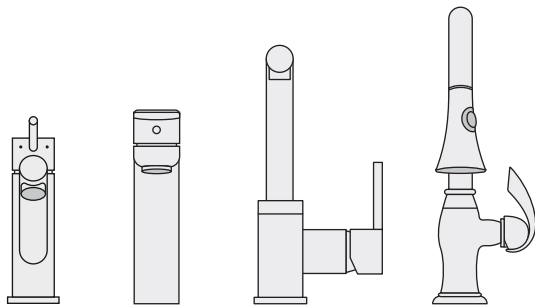




# Kitchen & Vanity Faucets



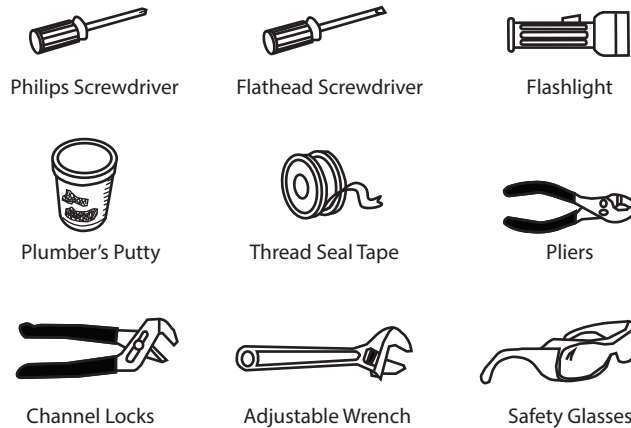
## Introduction

Thank you for purchasing an authentic Rhodium® faucet. The faucet you have purchased is crafted out of the highest quality nickel, brass and stainless steel. Each and every faucet was tested and carefully inspected by hand before delivering to our retailers.

Please read the instructions carefully to prevent any malfunction and damages to your plumbing and property.

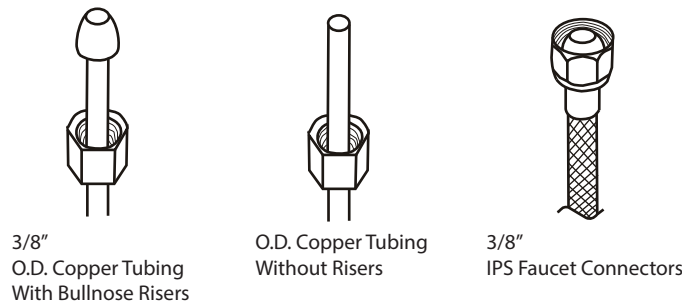
## Tools

The tools below are required to complete the installation. Some may not be needed depending on the model of the faucet that you are installing. For additional information, check with your local hardware store on the requirements for your installation.

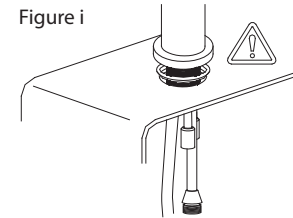


## Connectors

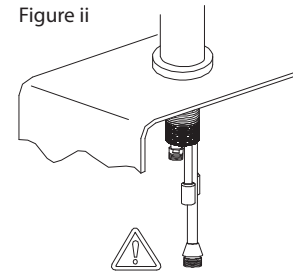
Below are three different types of water supply line connectors that you may have in your house. If you encounter a different type of connection that is not listed below, please consult your local hardware store for more information.



## Single Hole Mounting



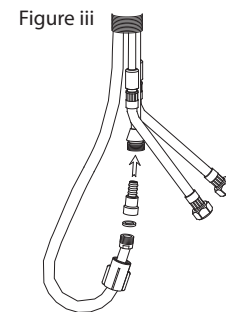
1. Turn off all water supply lines and drainage lines.
2. Clean the installation area thoroughly and remove any excess debris.
3. Place gasket around the base of the faucet before inserting it into the mounting hole. (Figure i)



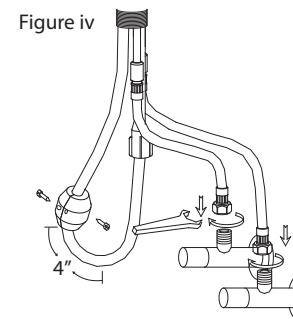
4. Assemble all the hardware, nuts, and attachments in the correct order. (See Figure ii)
5. If your faucet has a pull-out, connect the pull-out hose to the brass connector. Depending on your faucet model, it could have a threaded connector, or a snap-on connector. (See Figure iii)



If your faucet does not have a pull-out, or is a vanity faucet, please skip to step 7.



6. Once the pullout hose is attached to the brass connector, let the hose hang naturally. Install the pull-out weight 4" away from the lowest point of the loop, in the opposite direction of the loop. (See Figure iv)



7. Before connecting the faucet to the water lines, make sure to flush the lines completely by running the water supply lines into a bucket or container. Use the adjustable wrench to attach the hot and cold water supply lines accordingly. (See Figure iv)

8. Please continue to the testing

**Helpful Hint:**  
Always use the supplied rubber washers on water supply connectors to prevent leaking. Also, always use an adequate amount of plumber's putty or thread sealing tape to prevent connectors from leaking.

## Triple Hole Mounting

Figure A



Figure B

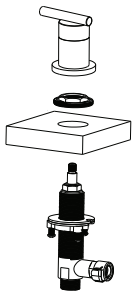


Figure C

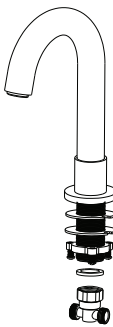


Figure D

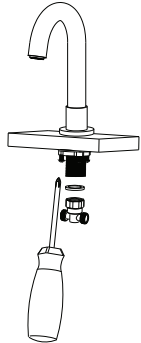


Figure E

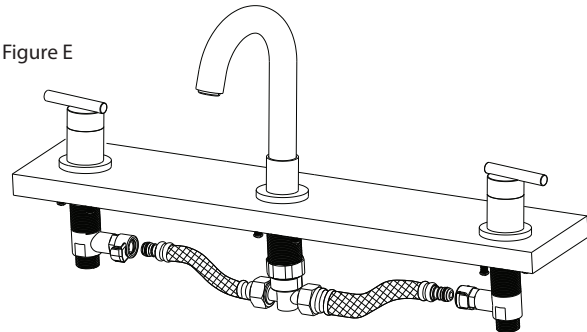
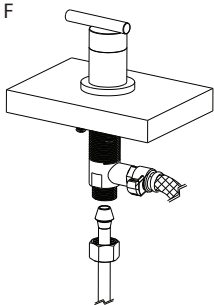
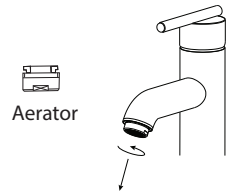
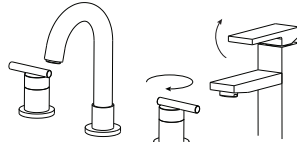
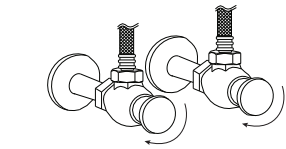


Figure F



1. Turn off all water supply lines and drainage lines.
2. Clean the installation area thoroughly and remove any excess debris.
3. To install the controls, disassemble the control assembly as seen in Figure A and reassemble according to Figure B.
4. To install the spout, disassemble the faucet assembly as seen in Figure C and reassemble according to Figure D.
5. Once the faucet and controls are all connected, connect the hoses between them. (See Figure E)
6. Lastly, connect the water

## Testing



1. Turn on water supplies and check all connections for leaks. If there are leaks, turn off water supplies and check to see if proper washers were used along with proper thread sealing tape.
2. Turn handles up and down or left and right (where applicable) and test both cold and hot water connections.
3. For models with dual spray selection, make sure to test both types of spraying thoroughly.
4. Remove aerator and let both cold and hot water run for one minute. This will remove any debris in the system that might otherwise clog the aerator.

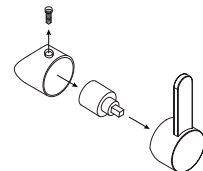
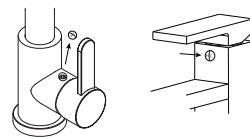
## Maintenance

Simply rinse the surface of the faucet with clear warm water regularly. For tougher grime rinse with a mild liquid detergent if necessary. Dry the faucet with clean soft cotton cloth.



Do NOT use any acidic cleaning solutions, abrasive cleaners, or harsh cleaners, as it may damage the natural polish or satin finish of your faucet.

All Pearl Sinks™ faucets are fitted with ceramic cartridges that can withstand more than 500,000 actuations. In the event that the cartridge malfunctions, follow these steps to replace it.



1. Find and remove the concealer cap to expose a hex screw. The concealer cap may sometimes look like a H/C cap. Then remove the hex screw to detach the handle.
2. Use a pair of pliers to remove the cartridge by gently pulling upwards. Sometimes there is a metal ring that needs to be removed before the cartridge can be removed.

## Warranty

The Rhodium Faucet Limited Lifetime Warranty covers replacement parts, including:

- a) Leaking or malfunction of the faucet head,
- b) Faucet handle if proven to be a manufacturing defect,
- c) Faucet cartridge,
- d) Other faucet components if proven to be a manufacturing defect. Any additional faucet problems beyond the above-mentioned may be covered by the Rhodium Faucet Limited Lifetime Warranty at the discretion of Rhodium.

Only replacement parts covered in the Rhodium Faucet Limited Lifetime Warranty are provided free of charge. Rhodium is not responsible for any shipping and handling costs.

The Rhodium Faucet Limited Lifetime Warranty does not cover finish reduction, scratches, staining, acid/alkaline etching, damage from chemicals such as alcohol and solvents, damage from cleaning practices, damage from abrasive cleaners, damage from atmospheric conditions, hose fatigue due to natural wear and tear, fatigue to the faucet due to excessive force, or reduced flow due to blockages from external debris.

Rhodium's liability only covers the Rhodium faucet and shall not exceed the purchase price of the faucet. Rhodium will not be responsible for any incidental or consequential costs associated with the removal or installation of the faucet or its accessories. This includes any damage and costs from repair, replacement, or labor. Any subsequent damage or incidents associated with the faucet will not be the responsibility of Rhodium. This includes flooring damage, water stains, cabinet damage, appliance damage, or accidents resulting in physical harm. Rhodium's responsibility only extends to the physical component of the faucet; any damages and harm resulting outside of the physical faucet are the responsibilities of the homeowner and installer.

The Rhodium Faucet Limited Lifetime Warranty extends only to the expected lifetime service of the faucet, which is 10 years. Rhodium Faucet Limited Lifetime Warranty extends up to 10 years from the original purchase date or date of occupancy in the original homeowner's home. Installations that do not follow the Rhodium instructions manual are not the responsibility of Rhodium. Rhodium strongly recommends all installations be carried out by licensed professionals. All installations require a waterline pressure test to ensure no debris slips into the hose. Rhodium is not responsible for any clogged hoses or reduced water flow resulting from dirty waterlines. Rhodium faucets are only warrantable for home use; any commercial usage voids the warranty.

To be eligible, the homeowner must be the original purchaser of the faucet. If the home where the faucet resides has changed owners, the warranty will be voided. The warranty is voided if the Rhodium product was relocated from its initial place of installation, including installation to a different sink within the building, relocation of the faucet to a new home, installation of the faucet after the rebuilding of the original home, installation on commercial property, or subjected to commercial use. The warranty will be voided if the faucet has been subjected to faulty maintenance, faulty installation, or misuse of the product.

To qualify for the Rhodium Faucet Limited Lifetime Warranty, the homeowner must provide proof of authenticity of the faucet and proof of purchase. Documents acceptable for proof of purchase include: the original receipt from a dealer, packing slip from the dealer, or invoice from the dealer. To prove the product in question is a Rhodium faucet, the homeowner must provide pictures of the whole faucet and a picture of the Rhodium logo. The picture of the whole faucet must be clear and identifiable as a Rhodium faucet. A picture of a disassembled faucet does not meet the requirements of a clear identifiable picture. The picture of the Rhodium logo must clearly show the logo; pictures distorted or modified by software void the warranty.